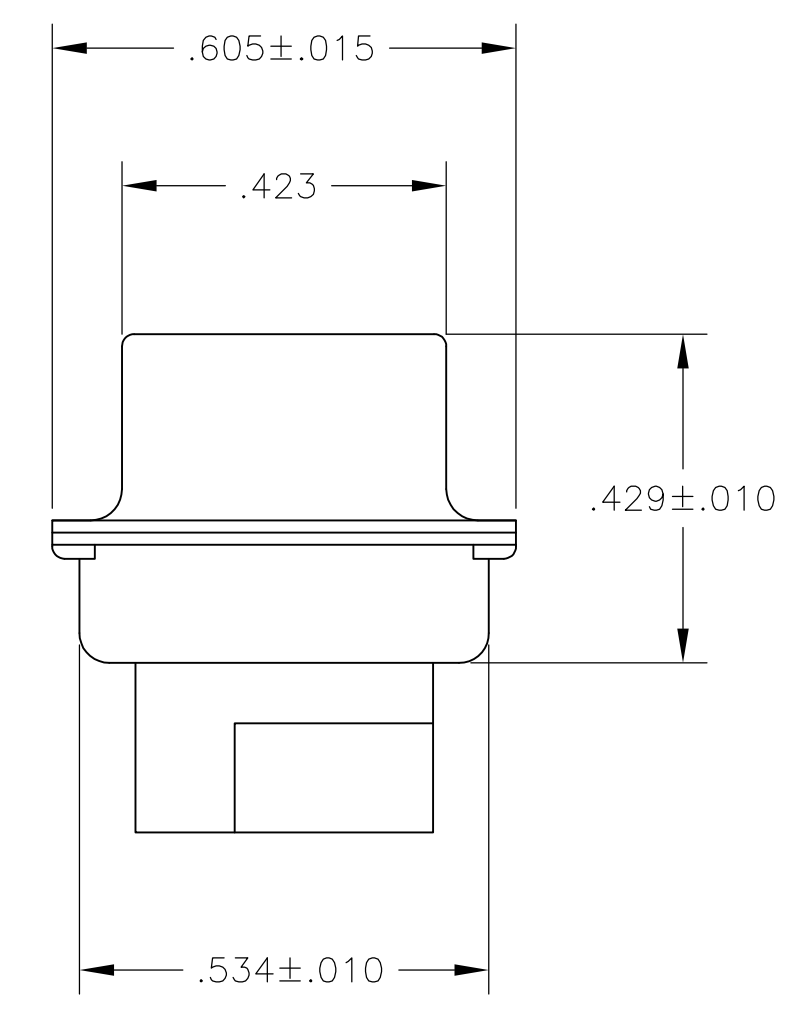
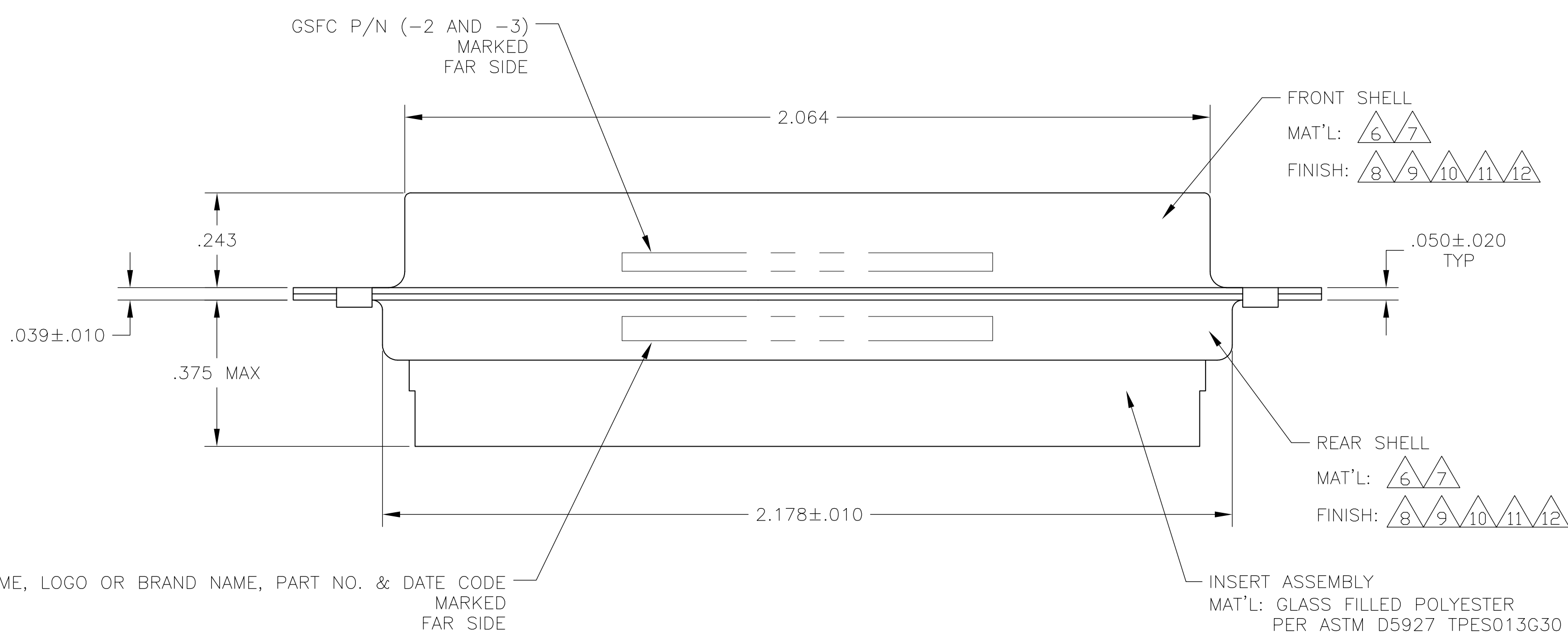
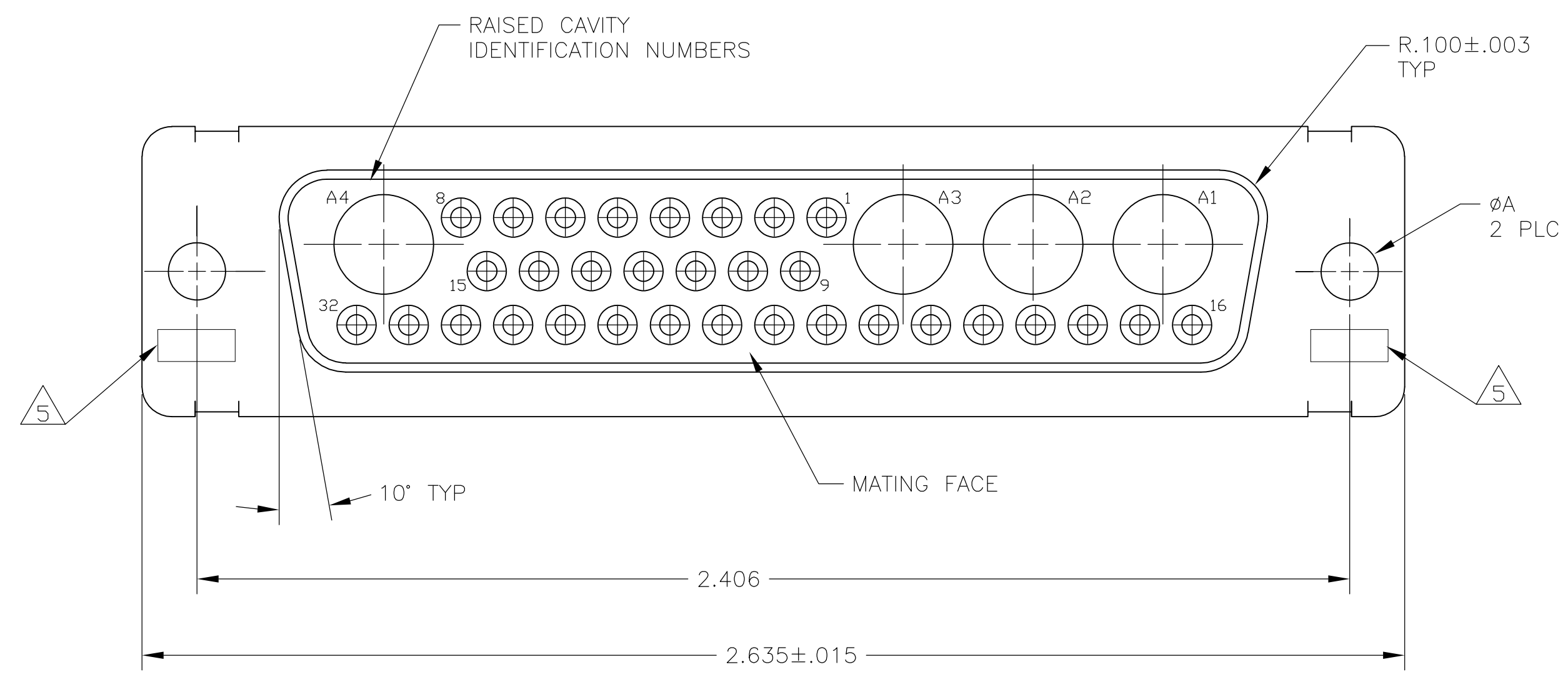


LOC	DIST	REVISIONS			
DF	DO	REV	PER	DATE	BY
M	REV PER ECO	08-024189		06NOV08	PK RL

- THIS RECEPTACLE WILL MATE WITH ANY 36C4, SIZE 5 PLUG IN AMPLIMITE SERIES.
 - MAXIMUM WIRE INSULATION TO BE USED WITH THIS RECEPTACLE IS $\phi.072$.
 - THIS CONNECTOR ACCEPTS (4) POWER 8, OR COAX SOCKET CONTACTS IN POSITIONS A1 THRU A4, PURCHASED SEPARATELY.
 - THIS CONNECTOR ACCEPTS SIZE 20 SOCKET CONTACTS IN POSITIONS 1 THRU 32, PURCHASED SEPARATELY.
- $\triangle 5$ UL/CSA DESIGNATION STAMPED IN THIS AREA, OPTIONAL.
 $\triangle 6$ MATERIAL: STEEL PER ASTM-A-109.
 $\triangle 7$ MATERIAL: BRASS PER MIL-C-50 AND ASTM-B-36 UNS NO. C26000.
 $\triangle 8$ FINISH: CADMIUM PLATED PER QQ-P-416, TYPE II, CLASS 2.
 $\triangle 9$ FINISH: GOLD PER MIL-G-45204 TYPE II, GRADE C, CLASS 1 OVER COPPER PER MIL-C-14550, CLASS IV.
 $\triangle 10$ FINISH: TIN PER ASTM-B-545 .000200 MIN THK OVER COPPER PER AMS2418 .000100-.000200 THK OR TIN-LEAD 93/7 .000200 MIN THK OVER COPPER PER AMS2418 .000100-.000200 THK.
 $\triangle 11$ FINISH: TIN PER ASTM-B-545 .000200 MIN THK OVER COPPER PER AMS2418 .000100-.000200 THK.
 $\triangle 12$ FINISH: ZINC PLATE PER ASTM-B-633 .000200-.000400 THK WITH SUPPLEMENTARY CHROMATE (Cr3+).



MFG'S NAME, LOGO OR BRAND NAME, PART NO. & DATE CODE MARKED FAR SIDE

$\triangle 6 \triangle 11$.120	-	5-208550-4
$\triangle 6 \triangle 12$.120	-	5-208550-1
$\triangle 6 \triangle 10$.120	-	208550-4
$\triangle 7 \triangle 9$.154	311P405-23S-B-15	208550-3
$\triangle 7 \triangle 9$.120	311P405-23S-B-12	208550-2
$\triangle 6 \triangle 8$.120	-	208550-1
REMARKS	ϕA	GSFC P/N	PART NO.

THIS DRAWING IS A CONTROLLED DOCUMENT.

DIMENSIONS: INCHES	TOLERANCES UNLESS OTHERWISE SPECIFIED:	0 PLC ± -	1 PLC ± -	2 PLC ± -	3 PLC ± .005(0.13)	4 PLC ± -	ANGLES ± 0°30'	FINISH
--------------------	--	-----------	-----------	-----------	--------------------	-----------	----------------	--------

DWN: T. SHUEY 07-JAN-88
 CHK: A. EMADI 27-JAN-88
 APD: A. EMADI 27-JAN-88
 NAME: Tyco Electronics Corporation Harrisburg, Pa 17105-3608
 PRODUCT SPEC: RECEPTACLE ASSEMBLY AMPLIMITE 36C4 SIZE 5, COAX MIX
 APPLICATION SPEC: -
 SIZE: A1 00779 ©=208550
 WEIGHT: -
 CUSTOMER DRAWING SCALE: 4:1 SHEET: 1 OF 1 REV: M